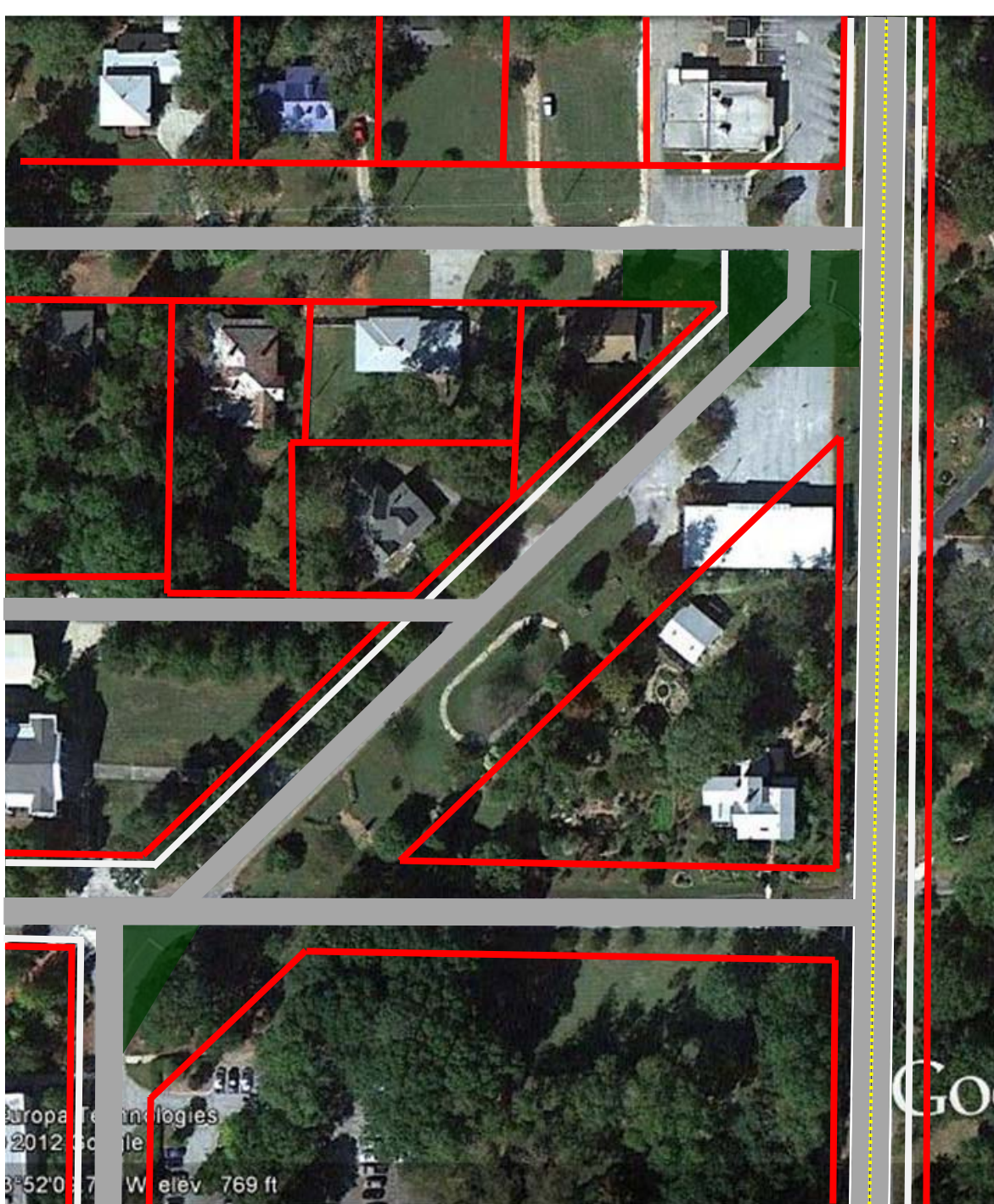


This is the current state, based on recent surveys.

Note that the George Street pavement has been curved towards its intersect with Whatcoat Street.

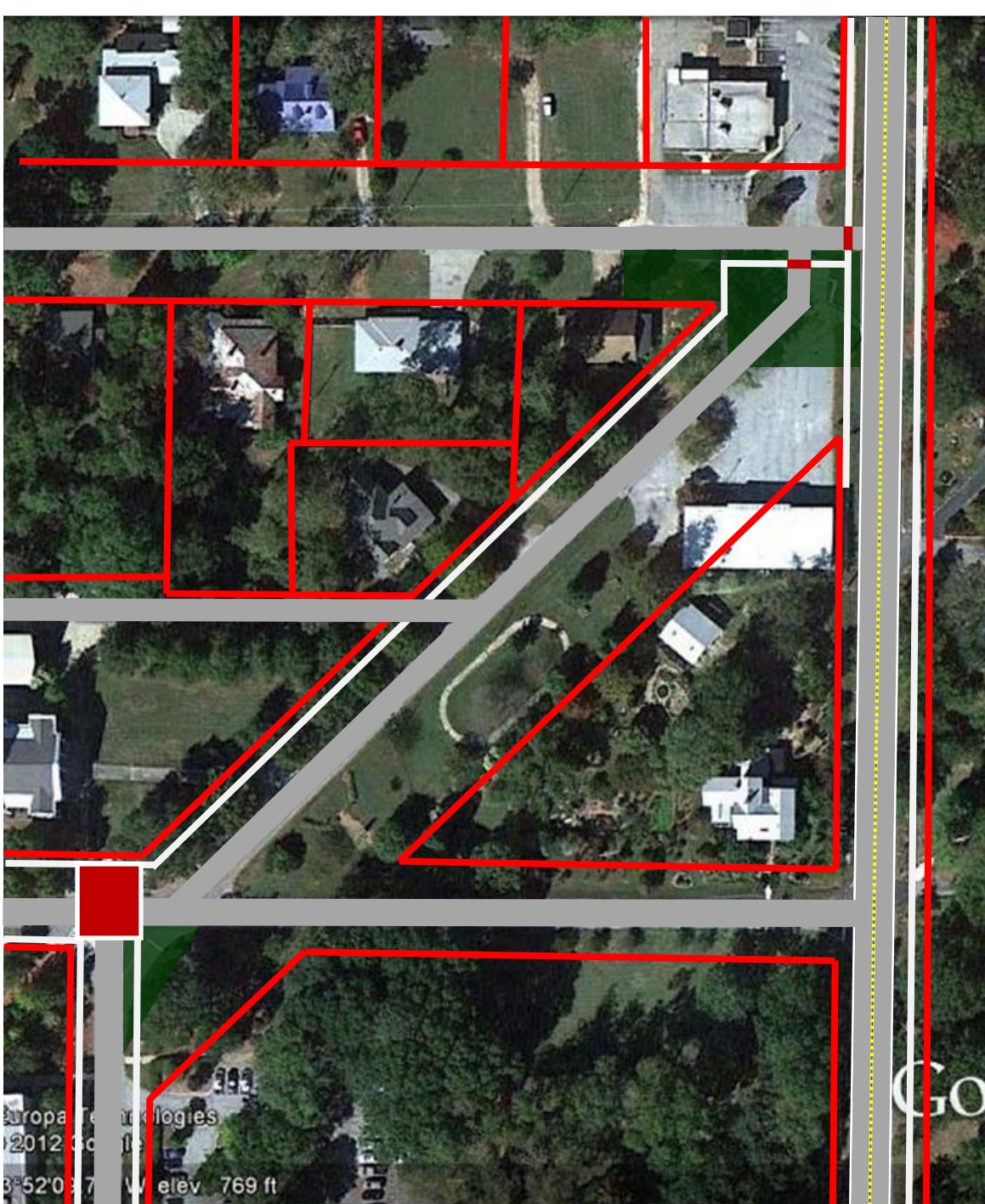
The northeast end consists of a significant amount of pavement. The intersection with George Street is ambiguous, and the old city hall parking lot flows into the street without demarcation.





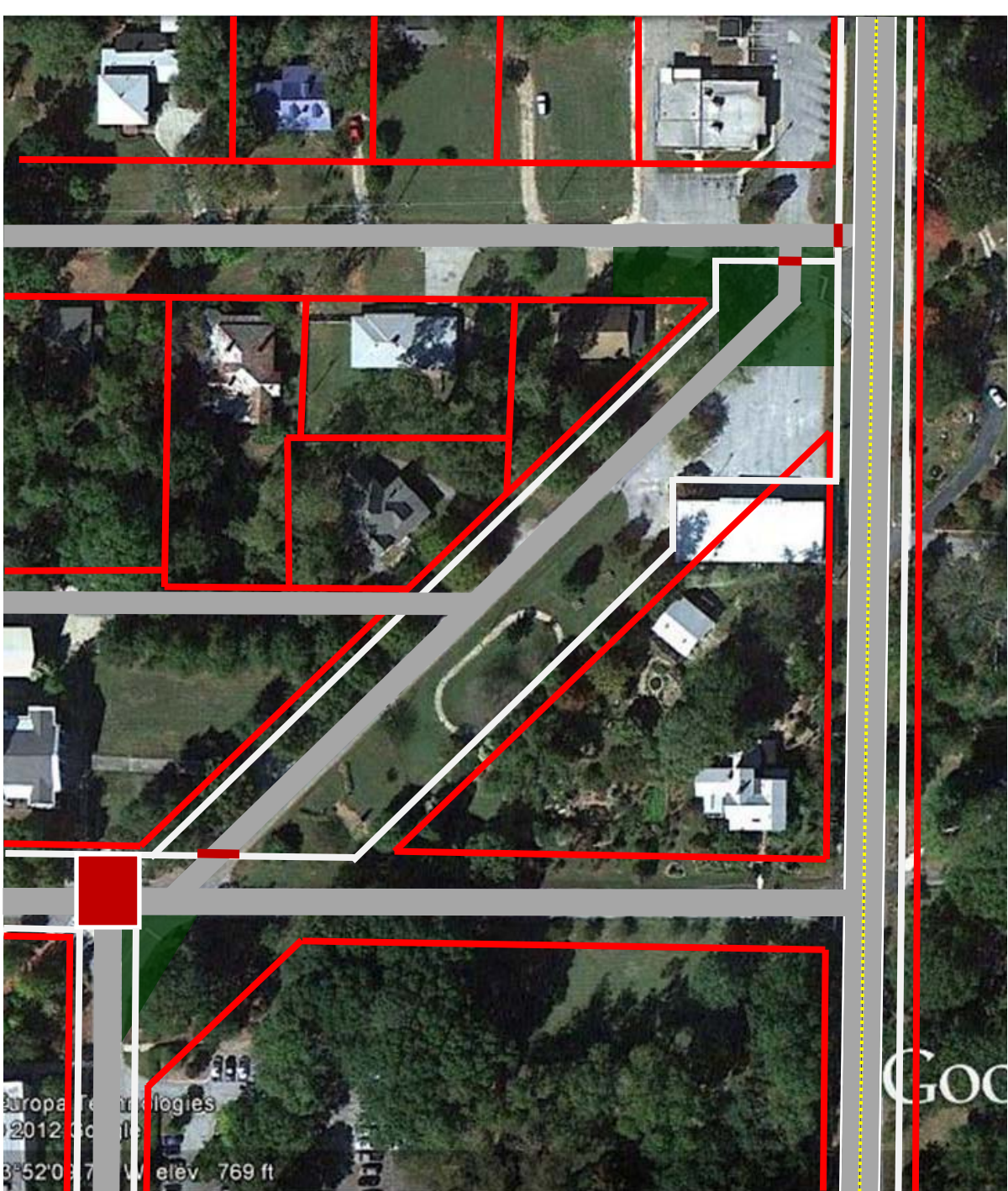
An easy first step is to remove unneeded pavement and to straighten George Street. This creates a “clean,” green, and clearly delineated intersection.





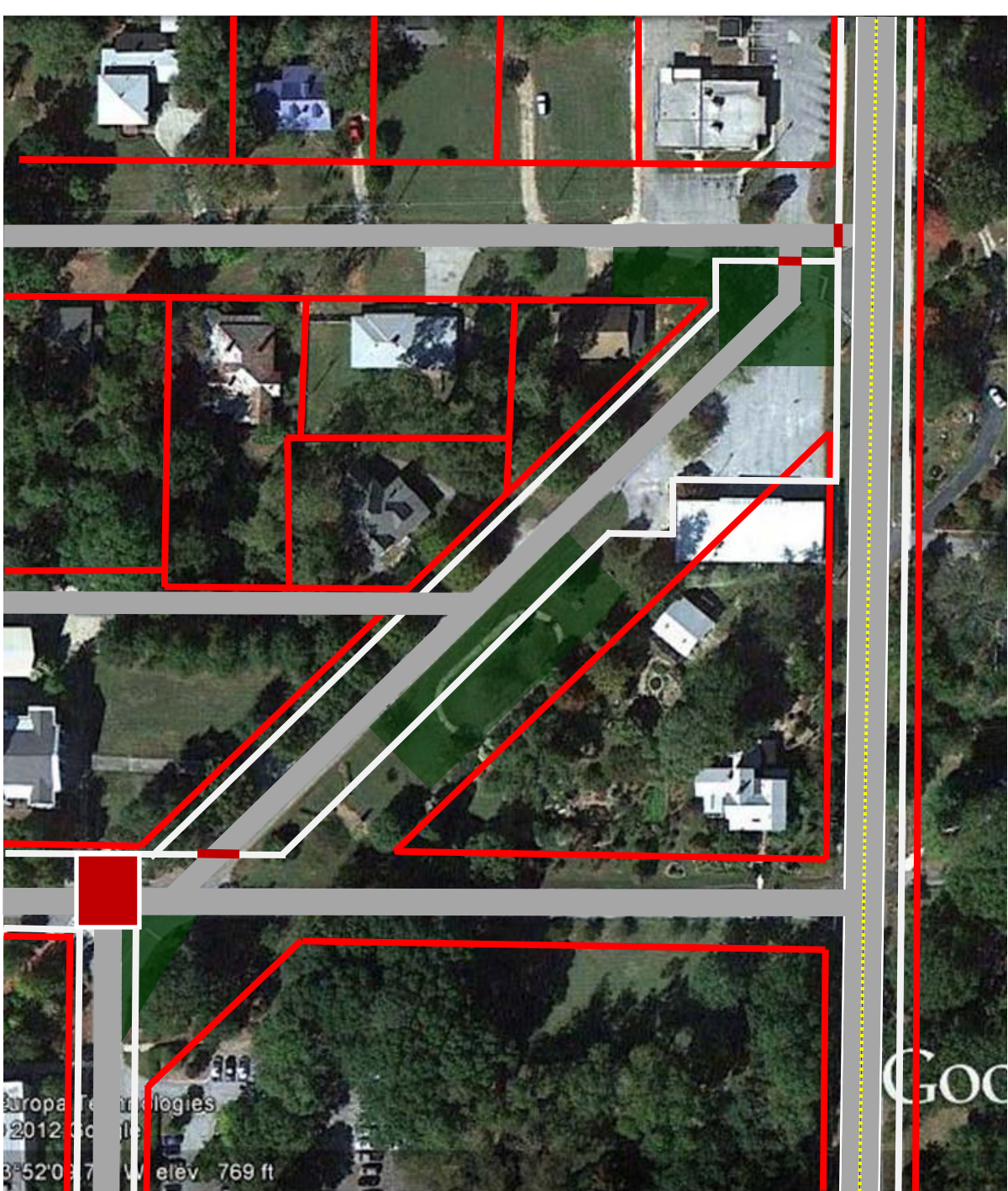
Another easy step is to extend the existing sidewalks and create crosswalks for safety.





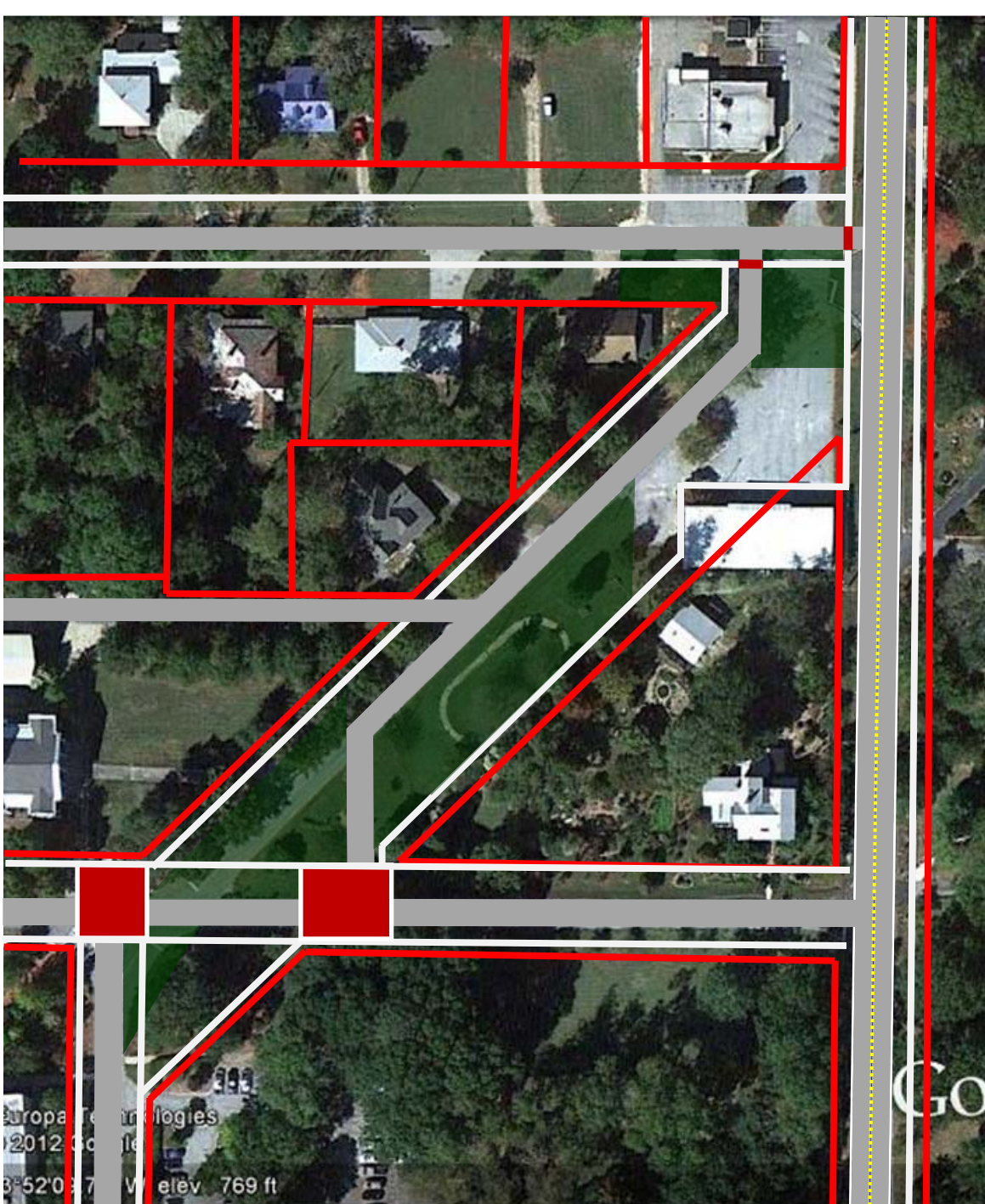
The city then could add a sidewalk to the southeast side of Whatcoat Street.





This shows a new sidewalk placed near the pavement on Whatcoat Street. It essentially mirrors what exists on the other side of the street.

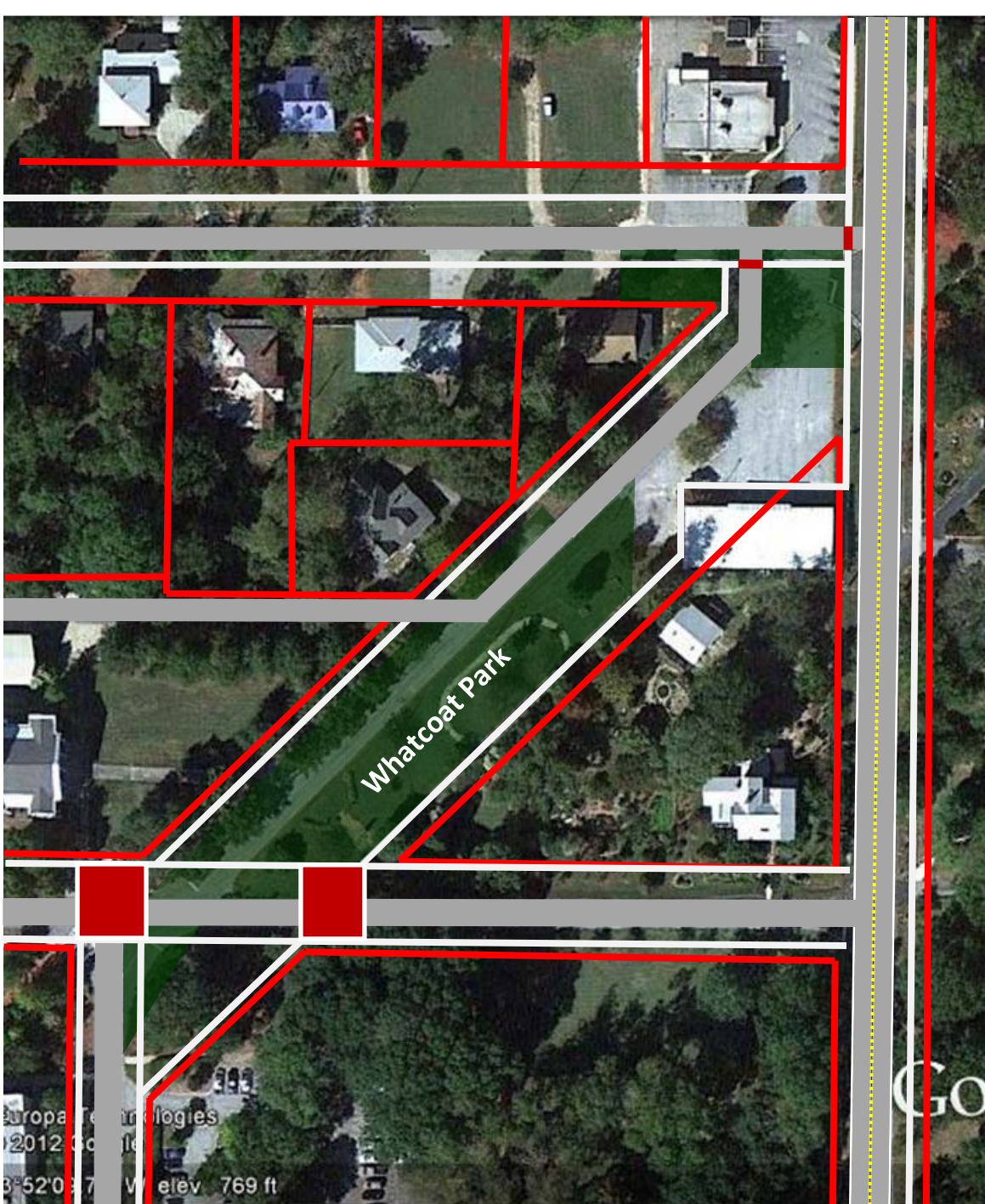




To improve safety, the city could shift the intersection of Whatcoat and Pierce Streets. This clears up ambiguity at the intersection with Haygood Street, and it removes unnecessary pavement.

These intersections are separated by about 100 feet.

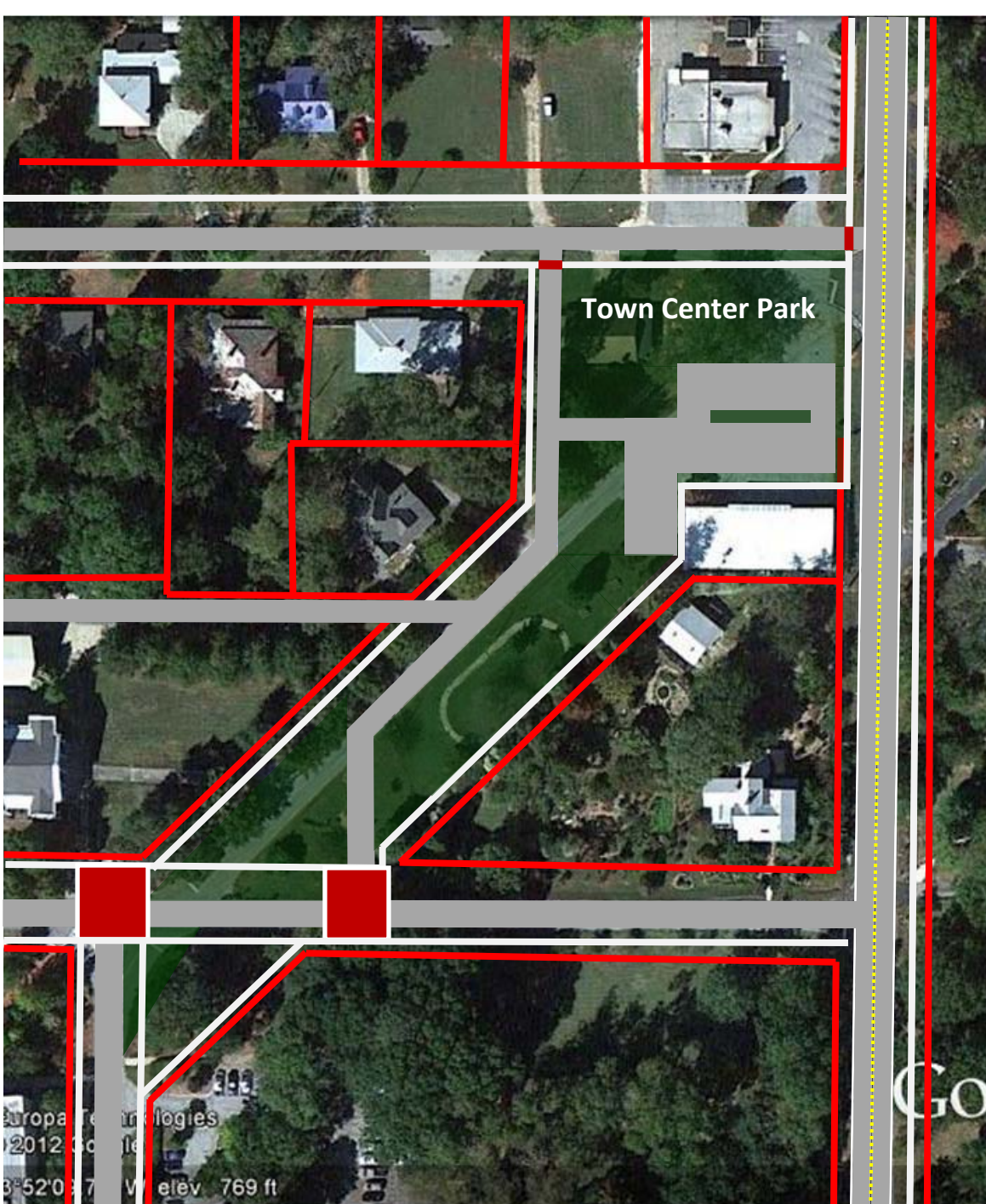




The city could close Whatcoat Street as a thru-way, providing only access down to the Allen Memorial UMC driveway. This would allow continued access to the residential property on Whatcoat Street.

Closing Whatcoat Street would create public green space along this corridor.



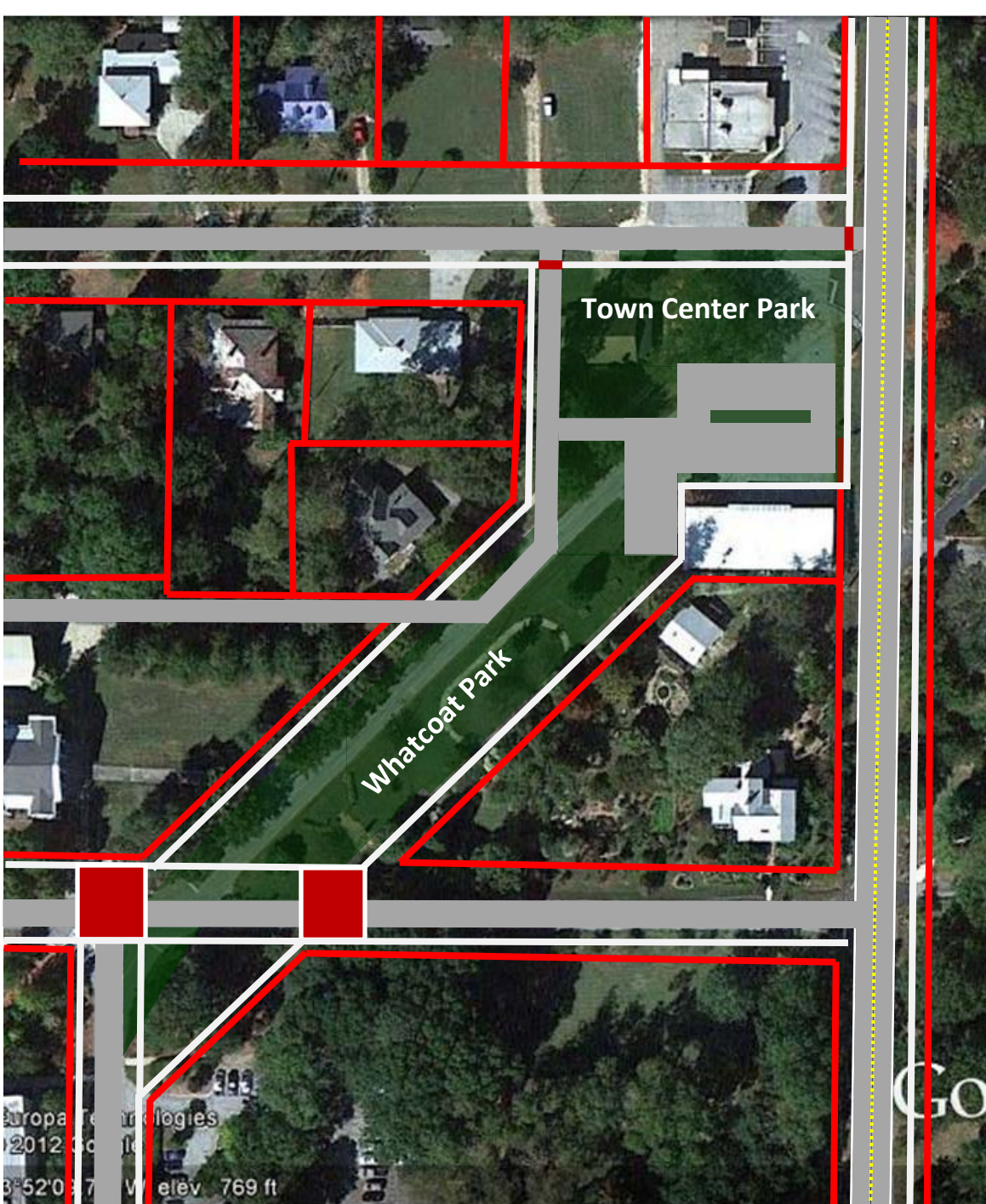


As a future phase, the city could acquire property and further realign the intersection of Whatcoat and George Streets.

This step affords opportunity for a “town center park” where new green space is created.

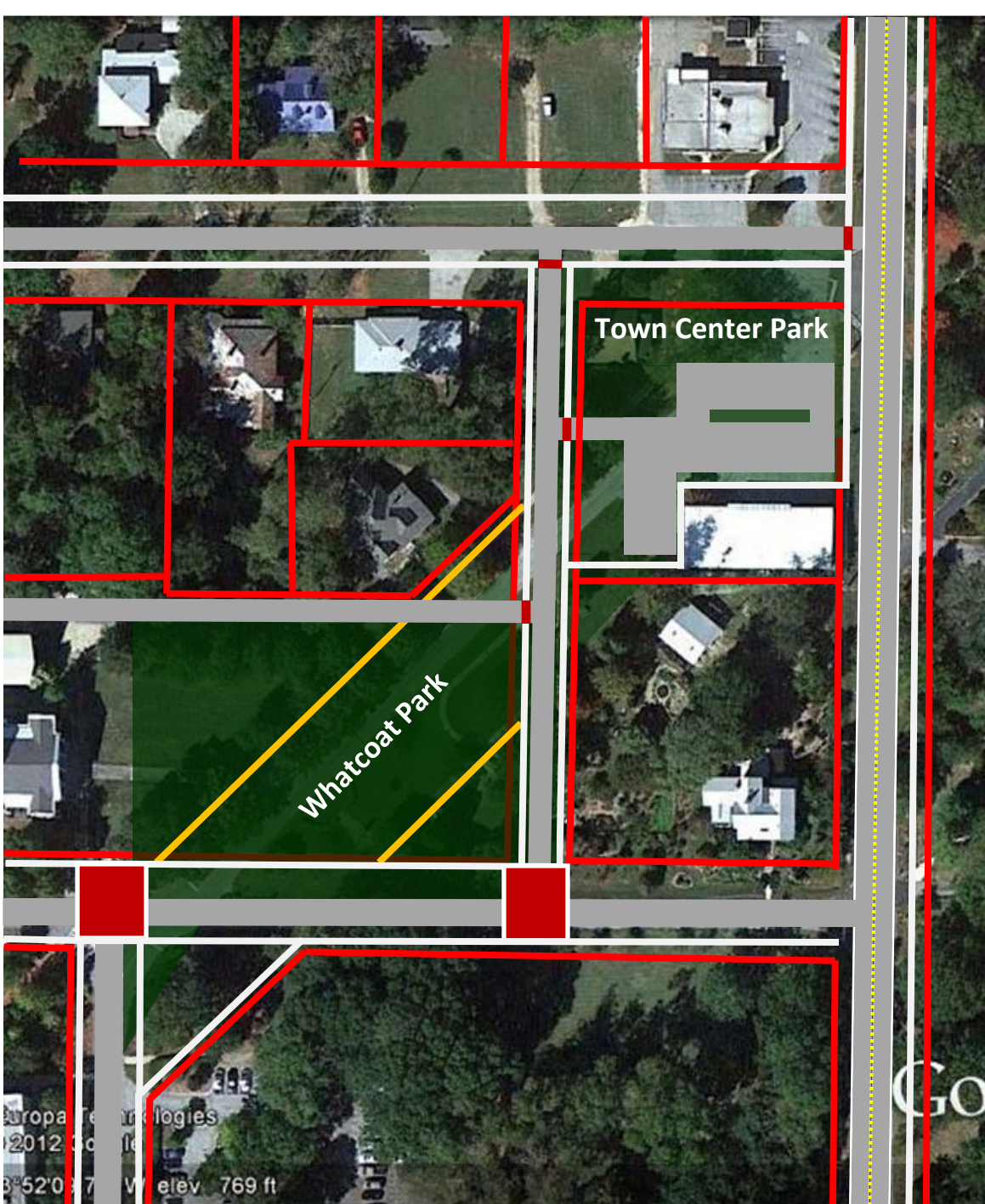
The city could extend sidewalks along the east side of Haygood Street and create a crosswalk at the realigned Whatcoat Street and Pierce Street intersection.





This shows Whatcoat Street closed south of Allen Memorial UMC's driveway.



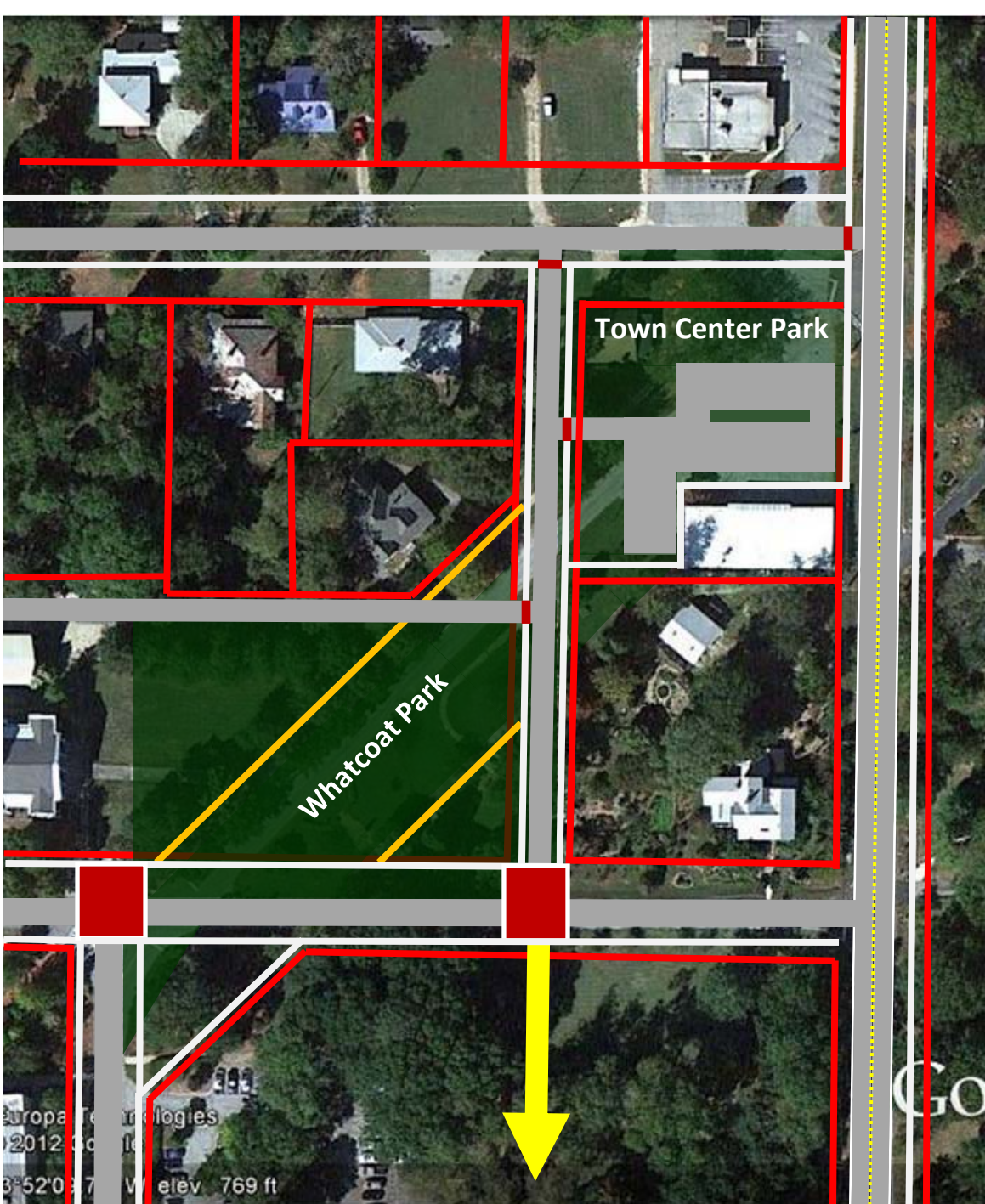


As a longer-term plan, with more property acquisition, the city could realign Whatcoat to run perpendicular from Pierce Street to George Street.

This creates opportunity for a new public green/lawn in front of Allen Memorial UMC, within the Whatcoat Street right-of-way.

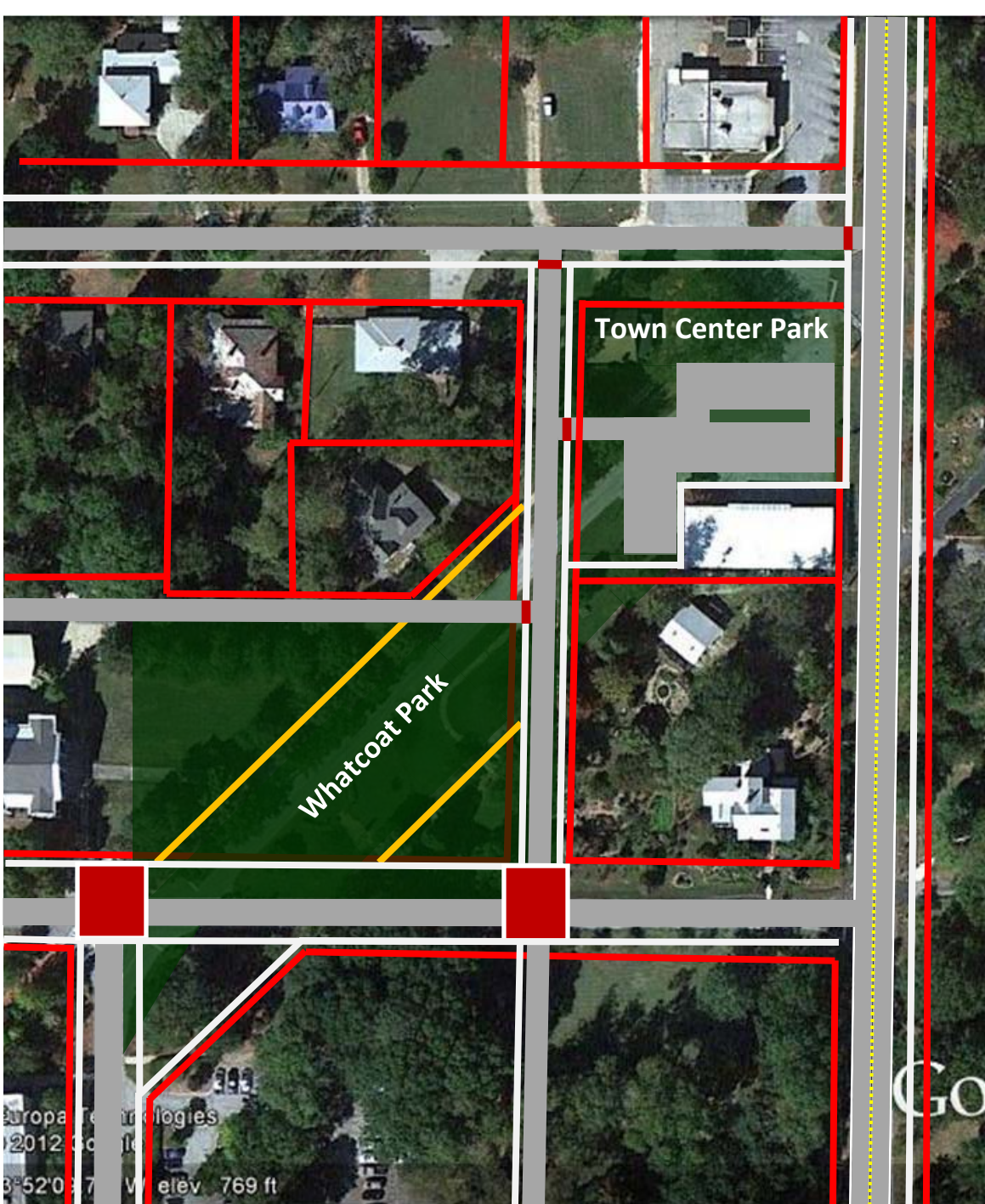
Yellow-colored walkways represent non-paved paths across the public green.





Emory/Oxford College has expressed interest in changing the entrance to the parking lot from Haygood Street to Pierce Street. This new entrance could align with the realigned Whatcoat Street to create a new intersection with pedestrian crosswalks.





These planning concepts make it more clear how and where pedestrians cross roadways. They also suggest more direct walking routes.

For example, pedestrians from East Village can walk directly across from Hamill to Pierce, without having to walk down Haygood Avenue.

Pedestrians from Allen Memorial UMC or Jolly Residential Center (JRC) can walk across the public green on the unpaved paths.